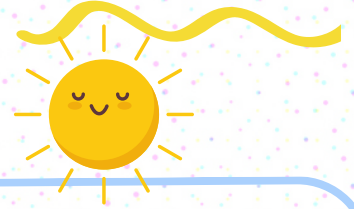


Summer Term

NEWSLETTER

Welcome To Briary Pre- School!



It has been very busy at pre-school, welcoming children back after the Summer holidays and settling in new children and their families that joined after Easter. We like to keep you informed of what is going on at pre-school, we have a closed Facebook page for families of the children who attend which is updated with news and what we have been doing.

<https://www.facebook.com/groups/briarypreschool>

A fabulous return to preschool following the spring break, leading our play, following our interests is our foundation to learning and our wellbeing and involvement. Each week we plan focused adult led activities called 'Invitations to Learn & Play' around what our children have been interested in, extending their learning.

Snack Donations

In line with the latest government guidance on nutrition, we kindly ask you provide donations of snack instead of providing individual snacks from home, however this may be introduced if we do not receive many donations, we also want to avoid making a charge for snack like many other settings. Children benefit from trying new foods and as a food champion setting, we are trying to limit the sugar intake of sugary snacks. We would love snack donations of, any fruit, bread, crumpets, , cream crackers, breadsticks, cheese, butter, cereals, sugar free jam, marmite and honey.

As a charity your donations are much appreciated and the children love to talk about what they have bought in for snack to share, children will also have the opportunity to prepare their snack.

Please ensure when donating snack, you do not donate any items that contains nuts, including peanut butter, nut products, hazelnut spread & loose nuts or bars.

Voluntary contribution £20.00 per term, this funds cooking and snack activities, sports coaching, small local outings and tapestry.



Dummy's and Comforters

You are welcome to bring in your child's dummy or a small comforter such as a muzzy or transition toy but please be mindful of large items such as blankets which may trail and create a trip hazard. We do not encourage tablets to settle children. Please speak to your key person if you are unsure.

We would ask you to kindly discourage children from bringing in their own toys from home, as they have not been safety checked and we cannot guarantee they do not get lost or broken.

We will wean your child from their dummy in the settling and only use them when your child is upset.

Tips:

- A dummy may discourage your toddler from chatting with you.
- Take the dummy out when your child is awake or settled.
- Offer a comforter or try reading a story instead.

Medication

Please do not leave medication in your child's bag, please pass to Carol, Nic or Maria on arrival, we will complete a medication consent form with you. Please note we do not administer painkillers unless prescribed by a GP, only prescribed medication we are permitted to administer. We will need to see the prescription label.



All about me's & shoe boxes!

April starters, please can you return your "All about me's" and shoe boxes. We use these to gather as much information on your child's likes/ dislikes, experiences, fears and they help your key person get to know your child as best as they can. The shoe box you were given, please can you return so that we can use them if your child is wobbly or upset.

In your email welcome pack there is a fact sheet called "All in a Shoebox" to help you put it together with your child. Please can you provide a family photo for our key group family boards.



Belongings & Nappies

Please ensure all **lunchboxes** and **drink bottles** are labelled with your child's name on. Please be aware if your child has grapes or cocktail sausages in their lunch box, they must be cut long ways, as they are a choking hazard. Thank you for your co-operation. **We are a nut free pre-school, all lunches from home need to be peanut and tree nut free & does not contain peanut butter, hazelnut spread or bars. We have a child attending with severe nut allergy and EpiPen, which can be fatal for the child if he ingests nuts or nut products.**

Please do not provide marshmallows, popcorn and only raisins if you are confident they can chew them thoroughly.

All belongings should be labelled clearly with your child's name on such as, coats, scarfs, gloves, hats, spare clothing, water bottles & lunch boxes.

What to provide each day in your child's bags: Please ensure you pack lots of spare clothes in your child's bags (Underwear, socks, tops, bottoms), nappies or pull ups (if applicable), wipes and nappy sacks. A small charge may be made if you do not provide nappies, wipes and sacks.



Welly Boots & Messy Play

Please could you provide named wellies for your child to wear for messy play and wet weather play and we will keep these at the pre-school to wear when needed.

Messy play develops a child's creativity, sensory exploration, thinking skills, gross & fine motor skill development, with that in mind please be mindful of not sending your child in clothes that you do not want to get dirty or wet. We encourage children to wear aprons and our waterproofs but sometimes children are adverse to wearing them and may walk away from an activity rather than wear an apron. We do of course teach children why they help keep them dry, and clean but we will not insist that a child wears one, we want to foster engagement and a love for sensory exploration. You can provide an oversized t-shirt (old adult one) for your child to wear for painting and messy play, if they will not wear an apron.

Please provide a change of clothes in your child's bags.



Two Year Checks

For our two year olds you should have received a letter and questionnaire about your child's two year check. It is a statutory requirement for us to complete a two year check with you.

If you have any concerns about your child's development, please use the form to share your concerns. We may arrange an Integrated review meeting with your health visitor at the preschool to share concerns. Nic is our two year old advocate, please speak to Nic if you would like more information.

Family Photo Boards

Please could we kindly ask if you would provide or send via email to briarypreschool@btconnect.com a family photo. Each key group has a family board to celebrate each child's uniqueness and build the importance of family. These will be displayed in your child's key group room.

Please speak to your key person for more information.



Book Loaning Library

Each week your child will bring home a book, once a week to share with you at home. Please then bring back the zippy wallet and they can choose another to bring home.

Please note a small charge will be made for lost or damaged books.



Chatty Bears

Your child will get the opportunity to bring home their key group bear to look after, please share your experiences with photos in the book provided.

A letter will be included with more information. Please look after the bear and the belongings and return to preschool the following week.

Please ensure this is not lost, as their will be other children's images in the book and some have image consents.



Festivals & Culture

At pre-school we celebrate diversity and promote inclusion, celebrating different festivals that our families enjoy, these include Christian, Muslim, Chinese, Vietnamese, Indian and other faiths.

Please speak to us if you celebrate a particular event or festival, and we can include this.

Understanding other faiths help children to value each other, sharing joy and learning about different cultures, building a sense of togetherness.



Upcoming Events

Upcoming dates for your diaries,

June:

Father's Day- Sunday 15th June 2025

Stay and Play Sessions for Fathers Day- Monday 16th June, Wednesday 18th June, 10am- 11am or 2pm- 3pm, Friday 20th June, 2pm-3pm.

Howlett's trip - Thursday 26th June 2025, deadline to return form and money by Thursday 15th May 2025.

Kent Photography Leavers - Monday 23rd June 2025

July:

Leavers Graduation Ceremony - Wednesday 16th July 2025, 1:30pm - 3:30pm

Library Trip for Younger children- Wednesday 16th July 2025, afternoon

Please be aware, some events may not be on here. Nearer to events, dates will be given out separately on our activities and events we will be taking part in.

Important Messages

- Please can we ask that parents/ carers do not park in the car park unless you have a prior agreement in place for dropping off a disabled child, the school have asked you do not enter the car park.
- Please do not park on the zig zag lines and the grass verge outside the grass area to the left of the gate, as this is blocking the entrance to the car park and is a danger to children.
- Please only press the pre-school buzzer at the gate when entering, not Thornden Woods Primary School buzzer unless you are here to visit the school.
- **If your child or their sibling is eating on arrival or collection, please ensure that they do not walk into the preschool setting eating, as crumbs fall off and is sometimes dropped which presents risk to our children with severe allergies.**
- Please always check your child's bag for important letters, updates from us.



Half Term Week and Spring Break



Please note, our half term this year is Monday 26th May 2025- Friday 30th May 2025

Return back to Pre-School on Monday 2nd June 2025.

Please see on our website for term dates www.briarypreschool.co.uk



We also have sent our the new term dates for September, this was sent via email, tapestry and is on our website.

Uniform

Briary preschool uniform is available for all children any time of the year. If you would like to order any nearly new (from previous families, which have been washed) or new polo shirts, sweatshirts or fleeces, we have stock available.

New Uniform

New Polo shirt	£8.50
New Sweatshirt	£11.50
New Zipped Fleece	£14.00

Nearly New Uniform

Nearly New Polo shirt	£5.00
Nearly New Sweatshirt	£6.50
Nearly New Zipped Fleece	£7.50

Please note, for new uniform some sizes may not be available and as these have to be pre-ordered through our supplier, there may be a wait as we have to order more.

Please also remember some nearly new sizes may not be in stock as these are second hand, and we can only provide the uniform we have been provided.



Opening times

Briary Pre-School is open term time only - 38 weeks of the year. Please look at our term dates page under Information, to see our closures for staff development days, bank holidays and holiday periods.

Monday	8:30am - 3:30pm
Tuesday	8:30am - 3:30pm
Wednesday	8:30am - 3:30pm
Thursday	8:30am - 3:30pm
Friday	8:30am - 3:30pm

Our entitlement hours are:

Monday - Friday, 8.30am - 11.30am = 15 hours
Monday - Friday, 12.30pm - 3.30pm = 15 hours
Monday - Friday, 8:30am - 3:30pm = 7 hours
(6 hours funding to make it 30 hours a week, one additional hour non funded for all day sessions, 7 hours)

Parents/ Carers provide their child with a packed lunch, in line with our nutrition advice and food champion advice. Please visit our Funding and Fees page under Information to see more details.



Fees

This is just a reminder that fees **must** be paid on time and in advance from your child attending their sessions. We are a charity run Pre-School and our only source of income is fees. You are welcome to pay via cash, cheque or bank transfer. Our Bank Account Details:

Lloyds Bank

Sort Code: 30-99-50

Account No: 17809463

If you have any questions or are experiencing any financial difficulties, please do not hesitate to contact Lucia Wells, our business and finance officer to discuss, Lucia is on maternity leave, but returns on Monday 19th May, or you can speak to Carol the manager.

As per your parent agreement *Please note*- Unpaid fees could risk you losing your child's place at pre-school.



Phoneline

If you wish to call the pre-school during 11:30am- 1:30pm, we may not be able to answer the phone as the office staff cover lunch club whilst our key persons go for their lunch. Please leave a message and we will return your call.

If for general calls outside these times, we will try and answer as soon as possible but if we do not, we will give you a call back or you can always email us at briarypreschool@btconnect.com.

We only have one phoneline for the pre-school.

Tapestry

Did you know that pre-school pay for your child's subscription to the wonderful online learning journey?

This is our online learning journey through educational software called "Tapestry". You can access this from home by logging on at <http://eyli.org/login/> with your secure username and password and you will be able to view your child's progress through observations, photographs and videos from their time in Briary Pre-School. If you haven't got a Tapestry account, please get in contact with Maria and she will be able to set you up on Tapestry as you will be missing your child's progress and lovely photos of their journey with us.



Aldi & Lidl Donations

Since September 2022 we have been registered with a company called "Neighbourly" who has kindly offered us the weekly opportunity to redistribute surplus food which they donate to local charities.

Every Monday Maria & Nic collect bakery donations, which includes cakes and bread from Lidl Herne Bay.

Please could we kindly ask to supervise your children when choosing the bakery items so they are not handling the food items and please could you not allow your little ones or siblings to walk into preschool eating. We have severe food allergies within the preschool and food may drop off on the floor posing a risk if ingested.

Every Tuesday, Maria & Nic go to Aldi at Whitstable, to pick up different food which varies each week for the pre-school and parents.

We also try to put donations outside our front door entrance to help families, so please help yourself.

We are very grateful for Aldi, donating a variety of different items each week which helps towards our cooking and snack provision, and families.



Wellbeing Tree

In our lobby we have a staff wellbeing tree, why not take one of the labels and leave a positive message of thanks for your key person or staff member to brighten their day.

Did you know that 1 in 6 people suffer stress in the workplace and statistics show that twice as many women suffer workplace stress than men. Promoting wellbeing can help prevent stress and create a positive working environment where staff can thrive and feel valued.

We will be introducing you to 'A Day in the life of' each week so that you can find out more about our lovely staff team too. We would like to further develop our partnerships with our families and would love your support with this.

Our trustees, many of which are parents, have suggested promoting staff wellbeing too, a kind word goes a long way.



Cool Milk

Did you know that your child receives a daily cow's milk allowance at preschool, funded by the department of Health and Social care.

Last year we served 6,494 portions of milk and ordered 1,299 litres of milk!



Please Name Belongings

Please can we kindly ask you to name your child's belongings, this will help us quickly identify lunch bags/ boxes, lunch drinks, coats, fleeces and wellies. Naming uniform is highly recommended too.



Eating on Arrival

Sometimes children arrive at pre-school eating a snack or breakfast. At the time of arrival staff are busy greeting and settling children and are not able to supervise your child eating, which is part of our eat safe policy. Please can we kindly ask you to reassure your child that they will be able to have snack when the snack bar opens at 9am and 1pm which is properly supervised.



Bottles and Sippy Cups

We have seen an increase in parents providing baby bottles and Sippy cups each day.

Please note we provide your child with a new sports bottle when they start with us, there is no need to send in a drink bottle or cup (this does not include lunch drinks). Did you know that the NHS recommend that bottles and Sippy cups are discouraged. Children drinking from a bottle on sweetened drinks causes tooth decay.

At preschool we promote milk and water. If your child will not drink water you can provide a bottle of sugar free squash so they remain hydrated, however the NHS warn that no added sugar drinks can encourage children to develop a sweet tooth, so water is best.



Mobile Phones NOT allowed

Please ensure that mobile phones are put away when entering the preschool. This is a safeguarding requirement to keep children safe. Mobile devices should not be answered in the setting or photographs taken.



Key Group Time

Each session, morning and afternoon your child's key person plans a motivating learning opportunity called Group Time. This is a 20 minute part of the routine and provides the opportunity to bond with their key person and peers in their group and participate in an activity, listen to a story and share thoughts and experiences, develop listening and attention skills and social skills experiences, morning group time starts at 11am and afternoon at 3pm.

Please be mindful of these times, particularly if you collect your child at 3pm. This will mean they will miss group time which is an important part of our routine.



Lunch Choices

Did you know Briary preschool has the NHS 'Food Champion Accreditation'? if you would like ideas on healthy lunch boxes please visit our website, go to the pull down menu 'About' then 'Food Champion'.

We do not allow sweets, chocolate bars or nut products. Chocolate covered biscuit bars or wafers are ok. Please be mindful that a child's stomach is the size of the palm of their hand, choices and smaller portion sizes are recommended with fruit and dairy choices, such as a yogurt. We do not recommend potato crisps, as they pose a choking risk, crisps that melt like wotsits, quavers, skips are better.

We do not allow popcorn or marshmallows in lunch boxes and if you provide raisins please ensure your child can chew them properly as they are one of the foods that can cause choking and are not recommended for under twos.



Please see next page for our Staff Team



Staff Team



Carol Smith
Pre-School Manager SENCO &
Designated Safeguarding Lead
(DSL) Early Years Leadership
and Management Professional
Development (20 Credits)
Level 3



Nicola Wheeler
Deputy Manager
Designated Safeguarding Lead (DSL)
Health and Safety Officer & 2 Year Old
Advocate
Early Years Leadership and
Management Professional
Development (20 Credits) Level 3



Maria Wheeler
Office Administrator
Working towards Website Design
& Social Media Marketing



Lucia Wells
Business and Finance Officer
Level 6
BA Honours in Early Childhood
Studies
MA in Early Childhood Education
Designated Safeguarding Lead
Assistant



Chloe Knight
Ladybird Key Person
Deputy Team Leader
Early Years Practitioner
Level 3- Children and Young
Peoples Work Force
Health & Safety Assistant
Designated Safeguarding Lead
Assistant



Claire Rocke
Dragonfly Key Person
Early Years Practitioner
NVQ Level 3



Quyen Tran
Honeybee Key Person
Early Years Educator Level 3
Early Years Practitioner Trainee



Alana Kember
Firefly Key Person
Early Years Educator Level 3
Early Years Practitioner Apprentice



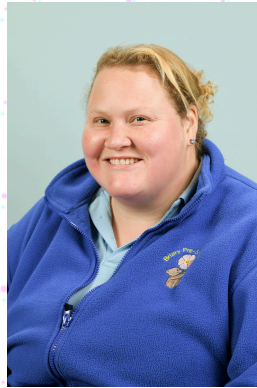
Mel Dallas
Butterfly Key Person
Working towards Cache Level 3
Diploma in Early Years
Early Years Educator



Staff Team



Samantha Gambrell
SEND Support Practitioner
Level 3



Jessica Jno Baptise
Early Years Practitioner (Cover
Staff)
Level 3



Sarah Littlewood
SEND Support Practitioner
Level 3
Level 2 Autism



Freya Gillibrand
Early Years Practitioner (Cover
Staff)
Studying Primary Education,
year 3 Level 6



Karen Saunders
Early Years Practitioner (Cover
Staff)
Level 3
Early Years Educator



Emma Waite
Early Years Practitioner (Cover
Staff)
Foundation Degree in Early
Years Studies
BTEC Childhood Studies



Frances Cotter
Volunteer



Amelia Lee
Canterbury College
Level 2 Student





Briary Pre-School Term Dates 2024-25

We offer funded pre-school education and open for 38 weeks of the year (190 days). Term time only from 8.30am - 3.30pm.
Our lunch club hour (11.30am-12.30pm) is not offered as part of the funded entitlement and is charged £7.50 per hour*

September 2024						
M	T	W	T	F	S	S
						1
2	3	4	5	6	7	8
9	10	11	12	13	14	15
16	17	18	19	20	21	22
23	24	25	26	27	28	29
30						

October 2024						
M	T	W	T	F	S	S
	1	2	3	4	5	6
7	8	9	10	11	12	13
14	15	16	17	18	19	20
21	22	23	24	25	26	27
28	29	30	31			

November 2024						
M	T	W	T	F	S	S
				1	2	3
4	5	6	7	8	9	10
11	12	13	14	15	16	17
18	19	20	21	22	23	24
25	26	27	28	29	30	

December 2024						
M	T	W	T	F	S	S
						1 Mon 14
2	3	4	5	6	7	8 Tues 14
9	10	11	12	13	14	15 Weds 14
16	17	18	19	20	21	22 Thurs 14
23	24	25	26	27	28	29 Fri 14
30	31					

January 2025						
M	T	W	T	F	S	S
			1	2	3	4
5	6	7	8	9	10	11
12	13	14	15	16	17	18
19	20	21	22	23	24	25
26	27	28	29	30	31	

February 2025						
M	T	W	T	F	S	S
					1	2
3	4	5	6	7	8	9
10	11	12	13	14	15	16
17	18	19	20	21	22	23
24	25	26	27	28		

March 2025						
M	T	W	T	F	S	S
					1	2
3	4	5	6	7	8	9
10	11	12	13	14	15	16
17	18	19	20	21	22	23
24	25	26	27	28	29	30
31						

April 2025						
M	T	W	T	F	S	S
	1	2	3	4	5	6 Mon 12
7	8	9	10	11	12	13 Tues 12
14	15	16	17	18	19	20 Weds 12
21	22	23	24	25	26	27 Thurs 12
28	29	30				31 Fri 12

May 2025						
M	T	W	T	F	S	S
5	6	7	8	9	10	11
12	13	14	15	16	17	18
19	20	21	22	23	24	25
26	27	28	29	30	31	

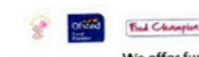
June 2025						
M	T	W	T	F	S	S
						1
2	3	4	5	6	7	8
9	10	11	12	13	14	15
16	17	18	19	20	21	22
23	24	25	26	27	28	29
30						

July 2025						
M	T	W	T	F	S	S
	1	2	3	4	5	6
7	8	9	10	11	12	13
14	15	16	17	18	19	20
21	22	23	24	25	26	27
28	29	30	31			

August 2025						
M	T	W	T	F	S	S
					1	2
3	4	5	6	7	8	9 Mon 11+1
10	11	12	13	14	15	16 Tues 12
17	18	19	20	21	22	23 Weds 12
24	25	26	27	28	29	30 Thurs 12
31						

Local Authority Funded Sessions
Non funded sessions (Pre-school Closed)
Pre-school Educational Visit (Funded day)

Staff Development Days (Pre-school Closed)
Bank Holidays (Pre-school Closed)
Give back day Tuesday for the Monday Children ONLY



Briary Pre-School Term Dates 2025-26

We offer funded pre-school education and open for 38 weeks of the year (190 days). Term time only from 8.30am - 3.30pm.

September 2025						
M	T	W	T	F	S	S
1	2	3	4	5	6	7
8	9	10	11	12	13	14
15	16	17	18	19	20	21
22	23	24	25	26	27	28
29	30					

October 2025						
M	T	W	T	F	S	S
6	7	8	9	10	11	12
13	14	15	16	17	18	19
20	21	22	23	24	25	26
27	28	29	30	31		

November 2025						
M	T	W	T	F	S	S
						1
2	3	4	5	6	7	8
9	10	11	12	13	14	15
16	17	18	19	20	21	22
23	24	25	26	27	28	29
30						

December 2025						
M	T	W	T	F	S	S
1	2	3	4	5	6	7 Mon 14
8	9	10	11	12	13	14 Tues 14
15	16	17	18	19	20	21 Weds 14
22	23	24	25	26	27	28 Thurs 15
29	30	31				31 Fri 14

January 2026						
M	T	W	T	F	S	S
5	6	7	8	9	10	11
12	13	14	15	16	17	18
19	20	21	22	23	24	25
26	27	28	29	30	31	

February 2026						
M	T	W	T	F	S	S
						1
2	3	4	5	6	7	8
9	10	11	12	13	14	15
16	17	18	19	20	21	22
23	24	25	26	27	28	

March 2026						
M	T	W	T	F	S	S
						1
2	3	4	5	6	7	8
9	10	11	12	13	14	15
16	17	18	19	20	21	22
23	24	25	26	27	28	29
30	31					

April 2026						
M	T	W	T	F	S	S
6	7	8	9	10	11	12 Mon 12
13	14	15	16	17	18	19 Tues 12
20	21	22	23	24	25	26 Weds 12
27	28	29	30			31 Thurs 11

May 2026						
M	T	W	T	F	S	S
4	5	6	7	8	9	10
11	12	13	14	15	16	17
18	19	20	21	22	23	24
25	26	27	28	29	30	31

June 2026						
M	T	W	T	F	S	S
1	2	3	4	5	6	7
8	9	10	11	12	13	14
15	16	17	18	19	20	21
22	23	24	25	26	27	28
29	30	31				

July 2026						
M	T	W	T	F	S	S
6	7	8	9	10	11	12
13	14	15	16	17	18	19
20	21	22	23	24	25	26
27	28	29	30	31		

August 2026						
M	T	W	T	F	S	S
3	4	5	6	7	8	9 Mon 12
10	11	12	13	14	15	16 Tues 12
17	18	19	20	21	22	23 Weds 12
24	25	26	27	28	29	30 Thurs 12
31						

Local Authority Funded Sessions
Non funded sessions (Pre-school Closed)
Pre-school Educational Visit (Funded day)

Staff Development Days (Pre-school Closed)
Bank Holidays (Pre-school Closed)
Give back day Tuesday for the Friday Children ONLY